

499parkavenue

THE LOBBY GALLERY AT 499 PARK AVENUE



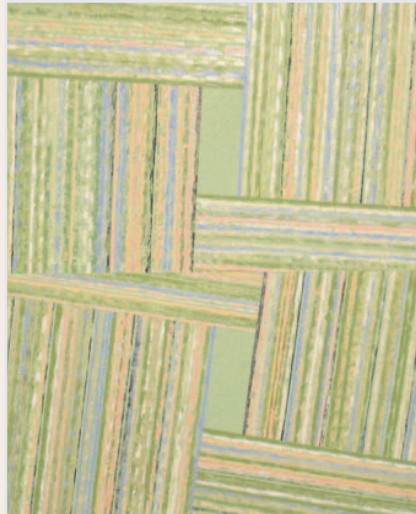
John Zinsser



Charles Butterly



Jon Nathanson



Lucio Pozzi

Cover: Michael Goldberg

# WALPOLE'S LEAP

8 MODERN GARDEN PERCEPTIONS

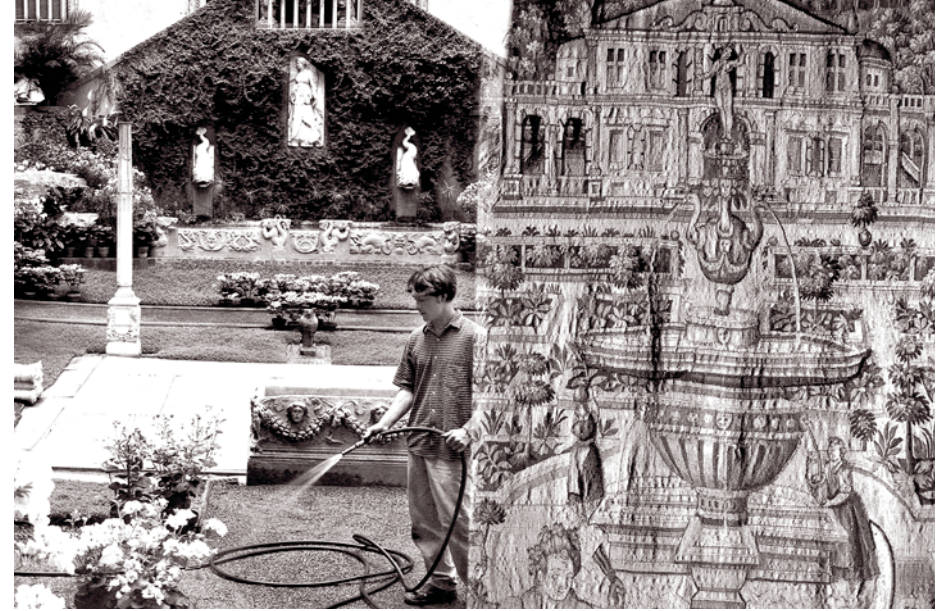


charles butterly, michael goldberg, santi moix,  
abelardo morell, jon nathanson, lucio pozzi, lynn stern,  
john zinsser

7 JUNE — 12 SEPTEMBER 2006

Right: Santi Moix

Opposite:  
Abelardo Morrell



**WALPOLE'S LEAP** is curated under the tenets of the brilliant Horace Walpole, the 4th Earl of Orford (1717 – 1797), an original and forward thinking art historian, architect, letter writer, Member of Parliament, Novelist and Publisher. Walpole believed in progress, modernization and the importance of leaping fences to see the world anew.

Walpole published *Anecdotes of Painting in England, Volume 4* (1780) which included his influential essay “On Modern Gardening”. The essay claims that England had invented a modern and “Natural” style of gardening in light of English political liberties.

Horace Walpole broke conventions, encouraging originality. Our exhibit applies these tenets to the artists and artworks presented here. We serendipitously discovered artworks that hinted of traditional, representational Gardens but

found new inspiration in Walpole's ideas of modernism and naturalism.

The images in the exhibition can evoke the presence of a garden wall between nature and culture, like **John Zinsser's** painting, *Exact Measure*, **Lynn Stern's** *Ghost Circle* photographs and **Charles Butterly's** cut-outs. Leaping off these walls, one can imagine larger views of intellectualized landscapes as seen in the paintings of **Lucio Pozzi** and **Michael Goldberg**. The intimate interior world of gardens can be experienced in **Jon Nathanson's** expressionistic painting on paper, the photograph, *Two Gardens* by **Abelardo Morell** and **Santi Moix's** drawing. Walpole inspires us to continually leap our fences and see that all nature is a garden of inspiration.

Artists have an affinity with gardening whether it is the process or through observation. Here is how

some artists view gardens:

**Robert Dash**, the wonderful painter and eminent gardener, owner of Madoo Conservancy in Sagaponack, NY says:

*“The hand that wields the brush not necessarily understands the trowel, and yet those are reciprocal acts of the wrist both come from the heart.”*

**John Zinsser**

*“Abstract painting is not a depiction of nature – it is an assertion of nature.”*

**Lucio Pozzi**

*“The gardener tends different species of plants, choosing them by unpredictable desire and placing them here and there by trusting the leaps of his mind. He tends each plant with the same extreme care, yet everything that he starts grows according to its own special and unique force.”*

#### Acknowledgements

The Gallery at **499 Park Avenue** wishes to thank Frank Saphire, Anthony Chang and Sue Avila of Hines for their support in making this exhibition possible.

**Curator:** Art Advisory Services, Inc.  
**Graphic Design:** Lenore Goldberg, Hines  
**Essay:** Judith Selkowitz, Rebecca Shea

**499 Park Avenue** and **Hines**, through their exhibition program, actively contributes to the cultural community as an expression of ongoing commitment to excellence in the visual arts and architecture.

For more information about this show, please contact [judith@artadvisoryservices.com](mailto:judith@artadvisoryservices.com)



Lynn Stern